

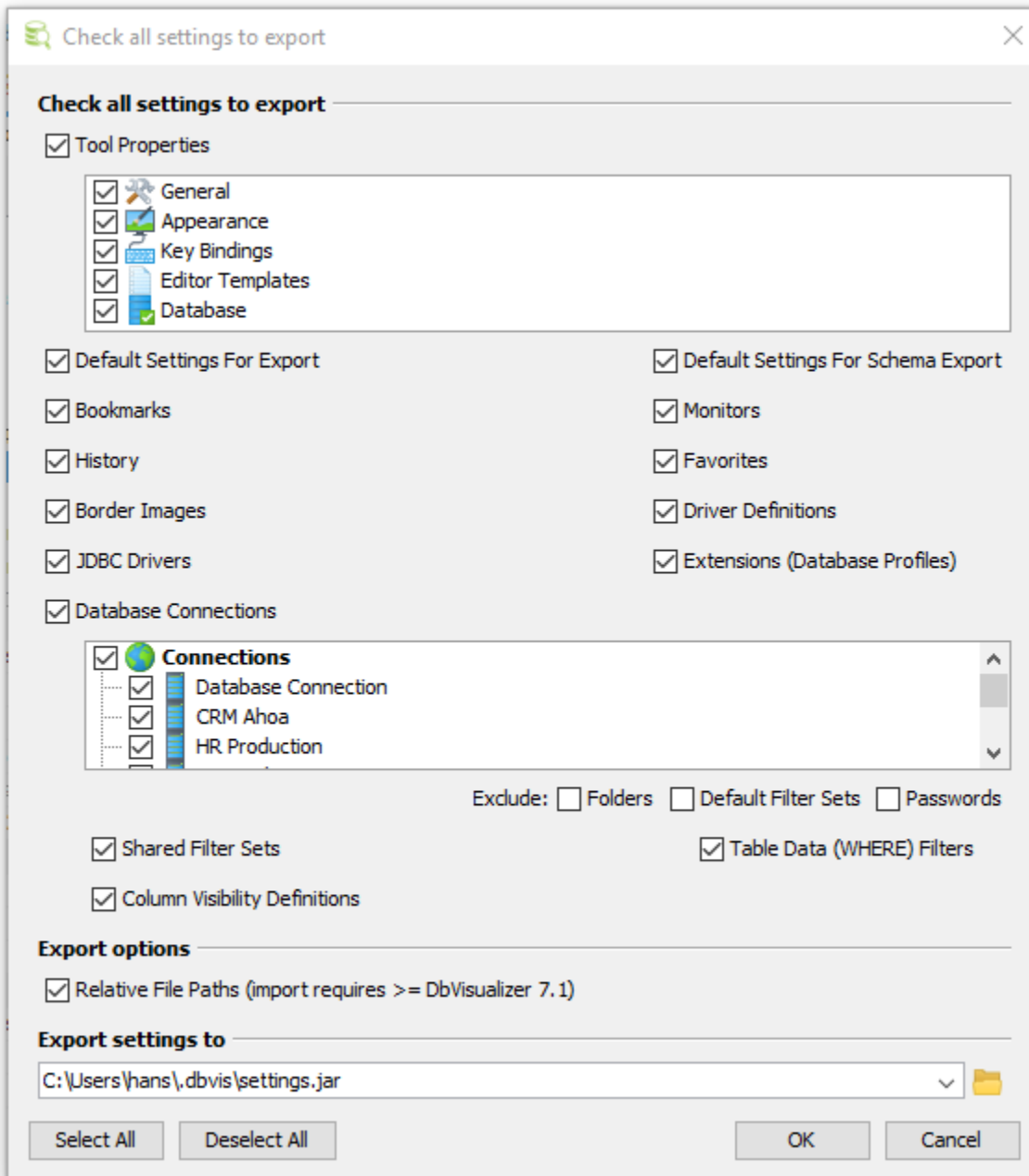
# Exporting and Importing Settings

Sometimes it may be necessary to migrate all your settings for DbVisualizer and import them in second DbVisualizer installation. This is very handy if you are migrating from one machine to another, or if you want to setup an exact copy on your home computer, or if you would like to share you settings with other users. Another key reason is for backup purposes. Loosing all database connection configurations can be really frustrating.

- [Export Settings](#)
- [Import Settings](#)

## Export Settings

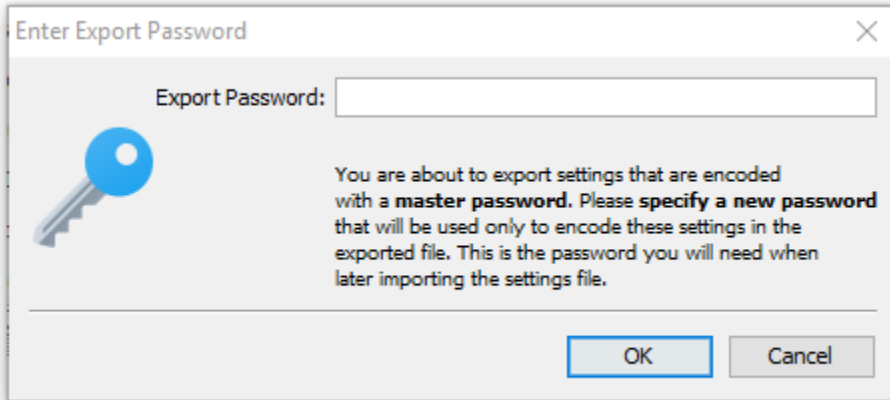
The Export Settings feature is available from the **File->Export Settings** main window menu choice.



The default settings ensures that all settings are exported, but you can selectively exclude certain items. Once you've made the adjustments you want, press OK and the settings will be saved in the specified file. The structure of this JAR file is the same as the content in your DbVisualizer preferences directory.

The **Relative File Paths** option will transform all path definitions in the exported file to be relative to the DbVisualizer installation directory and your personal settings directory. This is useful if you will import the settings on another machine or share it with other users. Note that the DbVisualizer version importing relative file paths must be 7.1 or later to work properly (importing in earlier versions than 7.1 will not fail but path information will be erroneous for things such as drivers, favorites, etc.)

If **Master Password** is enabled for DbVisualizer and passwords are not excluded in the export you must specify an export password. The export password is used to protect the passwords that are exported. This export password is used later when importing the settings.

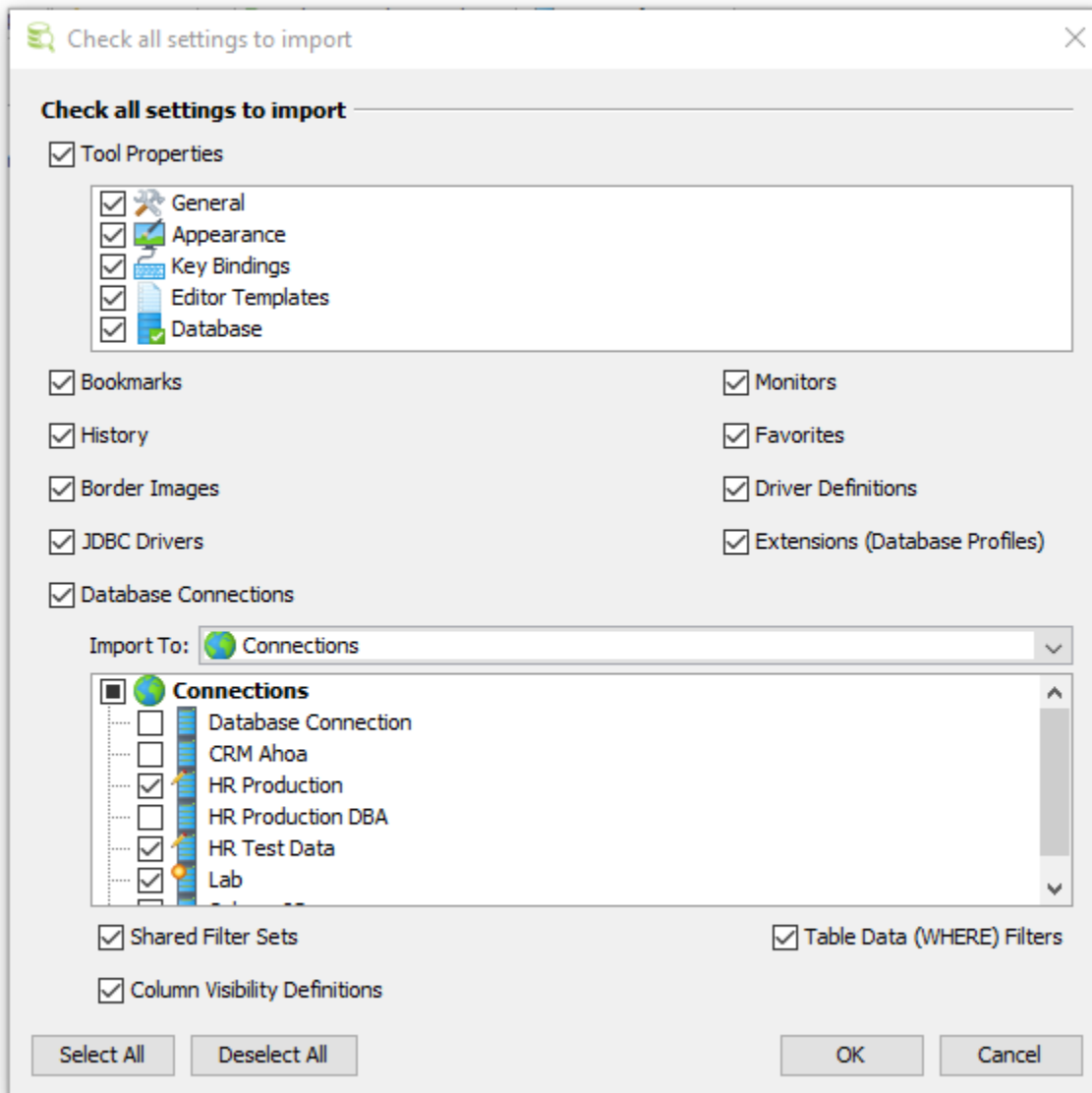


You should **not** use your master password as the export password.

## Import Settings

The Import Settings dialog is launched from the **File->Import Settings** main window menu choice.

Import Settings is used to import settings as previously exported with Export Settings. Import examines the content of the specified file and present the choices available.



Use the **Import To** list to set where the imported database connections will appear in the objects tree.

Note how some of the databases and folders are pre-selected. DBVisualizer will automatically pre-select databases and folders depending on differences between the current connection settings and the imported connection settings. In this example, the icon decorations for the pre-selected connections show that the **HR Production** and **HR Test Data** connection already exist but the imported settings are different, and that the **Lab** connection exists only in the imported settings. All the other connections exists with the same settings as in the imported settings.

If the imported data has been exported with an export password you will be prompted to enter it. You can optionally click Cancel to clear the passwords for all the connections.

Enter Password for Imported Connections



Password:



You are about to import database connections that are encoded with a password. Enter that password or click **Cancel** to clear the passwords for the imported database connections.

OK

Cancel